



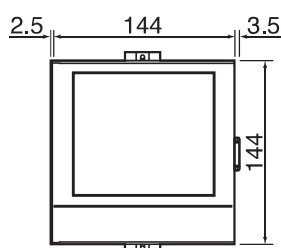
### คุณสมบัติ

- รับอินพุตประเภท Thermocouple Type K, E, J, T, C, N, PL II, U, L, R, S, B, PR40-20, AU-Fe/ RTD/ PT100/ JPT100/DC Voltage (-10-10mV, 0-20mV, 0-50mV, -0.2 to +0.2V, -1 to +1V, -10 to +10V, 0-5V)/ DC Current 4-20mA
- การแสดงผลทางหน้าจอ Bar Graph Display, Digital Display, History Display, Trend Display (Horizontal/ Vertical Directions), Historical Trend Display (Horizontal/ Vertical Directions)
- มีฟังก์ชันการอะลาร์ม
- แรงดันไฟเลี้ยง 100-240 VAC
- หน้าจอแบบ Touch Screen ขนาด 5.7 นิ้ว TFT Liquid Crystal Display ได้ถึง 16 สี
- สามารถเลือกรับอินพุตได้แบบ 6 แชลแนลอินพุต, 9 แชลแนลอินพุต, และ 12 แชลแนลอินพุต ได้ตอนสั่งซื้อ
- เก็บข้อมูลด้วย SD CARD
- เพิ่ม OPTION DI/DO Card ได้
- มีฟังก์ชันการสื่อสารแบบ ETHERNET
- สื่อสารผ่านพอร์ท RS-485 (MODBUS RTU Protocol)
- ขนาด 150(กว้าง) x 144(สูง) x 181.8(ลึก)
- ระดับการป้องกัน IP 67 สามารถป้องกันน้ำ และฝุ่นละอองได้ดี
- ได้รับรองมาตรฐาน CE

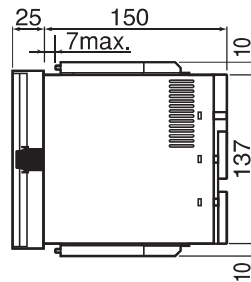
### ข้อมูลทางเทคนิค

INPUT	NO. OF POINTS	SELECTABLE FROM 6, 9 AND 12 POINTS * When 12-point type is selected, the option selection for the DI/DO card cannot be made.	RECORDING FUNCTION	RECORDING MEDIUM	SD Card (Max. 2 GB) SDHC Card (Max. 32GB)
	MEASURING CYCLES	100ms		INTERNAL MEMORY	Appx. 100MB
	DATA SAVE CYCLE	Selectable from 1 sec. to 60 min. (Main/Sub Data Save) For Sub-Data Save, 100ms is selectable		RECORDING METHOD	Recording starts in fixed cycle by turning ON the REC key on the front face. New data file is made in every start of recording
	INPUT TYPE	THERMOCOUPLE K, E, J, T, C, N, PL II, U, L, R, S, B, PR40-20, AU-Fe R.T.D. Pt100, JPt100 DC VOLTAGE -10 to +10mV, 0 to 20mV, 0 to 50mV, -0.2 to +0.2V, -1 to +1V, -10 to +10V, 0 to 5V DC CURRENT 4-20mA (external shunt resistance)		COMMUNICATION FUNCTION ETHERNET 10 BASE-T MODBUS TCP Protocol	DATA SAVE PERIOD Selectable from 1 sec. to 60 min. DATA SAVE PERIOD Selectable from 1 hr. to 1 year DATA FORMAT CSV Data Appx. 120 bytes for every data save cycle (In 6-CH input) Binary Data Appx. 30 bytes for every data save cycle (In 6-CH input) * Data volume depends on the recording condition
PERFORMANCE		INDICATION ACCURACY ± of the input range (0.1% + 1-digit)	GENERAL SPECIFICATION	ATTACHMENT METHOD Attached to the panel (vertical panel)	
DISPLAY		DISPLAY TYPE	5.7-inch TFT Color LCD (QVGA) Touch Panel Resistive Touch Display	MATERIAL	Polycarbonate Glass 10% UL94-V0 (Case, bezel)
	DISPLAY COLOR	16 colors	EXTERNAL DIMENSION	150 (W) × 144 (H) × 181.8 (D)	
	DISPLAY CONTENTS	Trend Display (Horizontal/Vertical Directions) Historical Trend Display (Horizontal/Vertical Directions) Bar Graph Display Digital Display History Display (Event/Communication)	WEIGHT	Appx. 1.0 kg. (6-CH input type)	
	SCREEN SAVER	BACKLIGHT AUTO-OFF	POWER SOURCE	100 - 240 V AC 50/60 Hz	
	BACKLIGHT LIFE	50,000 HRS.	NORMAL OPERATING CONDITION	Power Voltage 85 to 264 V AC Ambient temp. 0 - 50°C Ambient humidity 20 to 80% RH	
	LANGUAGE DISPLAY	Japanese/English is selectable from the set display		POWER CONSUMPTION	Less than 15VA (100V AC) Less than 25VA (240V AC)
ALARM FUNCTION	No. OF SETTING	Up to 4 setting is possible for every input channel	OPTION	DI/DO CARD DI/DO Input (Non-voltage contact) 9-points Output (open collector) 12-points	
	ALARM OUTPUT	1-point (Open collector output)	COMMUNICATION	RS-485 MODBUS RTU Protocol	
	CONTACT STD.	30V DC 20mA			

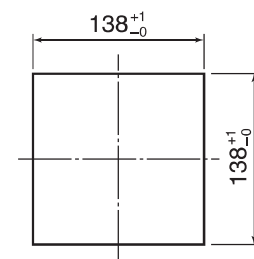
### ขนาดและมิติ



Front



Side



Panel cutout

Unit: mm

# TRM20 A



INPUT POINT	06	6-point		
	09	9-point		
	12	12-point (DI/DO cards not selectable)		
OPTION	①	Communication (RS-485)	0 without	1 with
		②	Input/Output (DI/DO card)	0 without
	③		Test Certificate	0 without
		1 with (English version)		2 with (English version)

### STANDARD ACCESSORIES

ITEM NAME	QTY.
MAIN UNIT	1 unit
PANEL ATTACHMENT METAL	1 set
CD-ROM PC SUPPORT SOFTWARE INSTRUCTION MANUAL (JAPANESE/ENGLISH)	1 pc.
FRONT SIDE WATERPROOF PANEL PACKING	1 pc.

NOTE: SD card is not supplied. Please purchase the card at the computer shop.

### SOLD SEPARATELY

ITEM NAME	MODEL
DC CURRENT INPUT SHUNT RESISTOR	HMSU3081A11
RS-485 COMMUNICATION TERMINAL RESISTOR	WMSU0303A01
DI/DO CABLE (1 m)	WMSU0468A01
DI/DO CABLE (3 m)	WMSU0468A02

NOTE: Cable is not included in the option DI/DO. If necessary, please purchase DI/DO cable sold separately.