

คุณสมบัติ

HMI

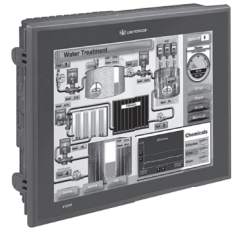
- จอแสดงผลขนาด 10.4 นิ้ว และ 12.1 นิ้ว
- จอแสดงผลชนิด TFT ความละเอียด 65,536 สี + LED Backlight
- แสดงผลในรูปแบบกราฟเส้นได้
- IP66/65/NEMA4X

PLC

- สามารถใช้งานร่วมกับ Snap-in I/O ได้
- I/O options include high - speed, temperature & weight measurement
- Auto-tune PID, up to 24 independent loops
- Micro SD card-log, backup, clone & more
- สามารถสื่อสารแบบ RS232/485, Ethernet, CANBUS และ USB ได้



Vision 1040™



Vision 1210™

ข้อมูลทางเทคนิค

An advanced PLC with an integrated 1210™/1040™ color Touchscreen, plus Snap-in and Expansion I/Os (up to 1000)

Article Number	V1040-T20B	V1210-T20BJ
I/O Options		
Snap-in I/O Modules	Plug these modules directly into the back of the Vision unit to create a self-contained PLC with up to 62 I/Os. Inputs may include Digital, Analog and Temperature Measurement. Outputs may include Transistor, Relay or Analog (sold separately).	
I/O Expansion	Local or Remote I/Os may be added via expansion port or via CANbus	
Program		
Application Memory	Application Logic: 2MB • Images: 80MB • Fonts: 1MB	
Scan Time	9µsec per 1K of typical application	
Memory Operands	8192 coils, 4096 registers, 512 long integers (32 bit), 256 double words (32 bit unsigned), 64 floats, 384 timers (32 bit), 32 counters Additional non-retainable operands: 1024 X-bits, 512 X-integers, 256 X-long integers, 64 X-double words	
Data Tables	120K dynamic RAM data (recipe parameters, datalogs, etc.), up to 256K Flash data	
SD Card (Micro)	Store datalogs, Alarm History, Data Tables, Trend data, export to Excel • Back up Ladder, HMI & OS, clone PLCs	
USB	1 USB programming port (Mini-B)	
Enhanced Features	Trends: graph any value and display on HMI • Built-in Alarm management system • String Library: instantly switch HMI language	
Operator Panel		
Type	TFT LCD	
Display Backlight Illumination	white LED	
Colors	65,536 colors, 16-bit resolution • Brightness- Adjustable via touchscreen or software	
Display Resolution & Size	800 x 600 pixels (SVGA), 10.4"	800 x 600 pixels (SVGA), 12.1"
Touchscreen	Resistive, Analog	
Keyboard		
Number of keys	9 programmable function keys	Virtual Keypad
General		
Power Supply	12/24VDC	
Battery	7 years typical at 77°F, battery back-up for all memory sections and RTC	
Environment	NEMA4X/IP65 (when panel mounted)	NEMA4X/IP66/IP65 (when panel mounted)
Clock	Real-time clock functions (date and time)	

* Not yet UL certified

คุณสมบัติพิเศษ

- | | | |
|--|---|--|
| <input checked="" type="checkbox"/> Color Display | <input checked="" type="checkbox"/> Web Server | <input checked="" type="checkbox"/> Remote Expansion |
| <input checked="" type="checkbox"/> Touch Screen | <input checked="" type="checkbox"/> Send e-mail | <input type="checkbox"/> Audio Player |
| <input checked="" type="checkbox"/> HMI Graph | <input type="checkbox"/> VNC connect to Smart Phone or PC | <input checked="" type="checkbox"/> Auto-tune PID |
| <input checked="" type="checkbox"/> Multi Language | <input checked="" type="checkbox"/> CANbus | <input checked="" type="checkbox"/> Data Logging & Trend |
| <input checked="" type="checkbox"/> Keypad** | <input checked="" type="checkbox"/> MODBUS | <input checked="" type="checkbox"/> Data Table |
| <input checked="" type="checkbox"/> Alarm History | <input checked="" type="checkbox"/> SMS | <input checked="" type="checkbox"/> Remote Access |
| <input checked="" type="checkbox"/> SD Card | <input checked="" type="checkbox"/> Snap-in I/O | |
| <input checked="" type="checkbox"/> TCP/IP* | <input checked="" type="checkbox"/> Expansion | |
| <input type="checkbox"/> USB | | |

* Option Card

** เฉพาะรุ่น V1040