

CENTER 305/306 Thermometer (K Type, Datalogger, PC Interface)



FEATURES

- Dual Input (306)
- Triple Display
- Clock Function
- PC Interface
- With Windows Software
- 16,000 Records Datalogger
- Resolution 0.1°C, 0.1°F



305 K Type
306 K Type Dual Input

SPECIFICATIONS

Range	K type: -200 ~ 1370°C, -328 ~ 2498°F
Accuracy	±0.3%+1°C, ±0.3%+2°F
Resolution	0.1°C, 0.1°F
Operation Temp.	0°C ~ 50°C (<80%RH)
Storage temp.	-20°C ~ 60°C (<70%RH)
Battery	9V Battery
Dimensions	184 x 64 x 30 mm
Weight	Approx. 210g.

STANDARD ACCESSORIES

MODEL	Battery	Manual	Carrying case	K-Type bead sensor	RS-232 cable	Software
CENTER 305	•	•	•	TP-K01 x 1 PC	•	•
CENTER 306	•	•	•	TP-K01 x 2 PCS	•	•

CENTER 309 Thermometer (K Type, Four Channels, Datalogger, PC Interface)



FEATURES

- Auto Power Off
- Four Channel Input
- Four Channel Display
- Wide Measuring Range
- With Windows Software
- PC Interface
- 16,000 Records Datalogger Each Channel
- Resolution 0.1°C, 0.1°F



SPECIFICATIONS

Range	K Type:-200 ~ 1370°C, -328 ~ 2498°F
Accuracy	±0.3%+1°C, ±0.3%+2°F
Resolution	0.1°C, 0.1°F
Input Protection	60V DC or 24 Vrms AC Maximum
Operation Temp.	0°C ~ 50°C (<80%RH)
Storage temp.	-20°C ~ 60°C (<70%RH)
Battery	9V Battery
Dimensions	184 x 64 x 30 mm
Weight	Approx. 220g.

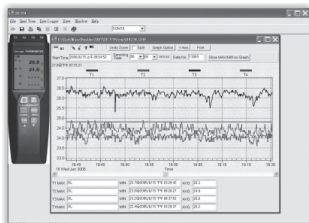
STANDARD ACCESSORIES

MODEL	Battery	Manual	Carrying case	K-Type bead sensor	RS-232 cable	Software
CENTER 309	•	•	•	TP-K01 x 2 PCS	•	•

CENTER 374 Thermometer (K Type, Four Channels, Datalogger, PC Interface)



WINDOWS BASED SOFTWARE INTERFACE



FEATURES

- Auto Range
- PC Interface
- Hold Function
- Four Channel Input
- Four Channel Display
- Resolution 0.1°C, 0.1°F
- With Windows Software
- MAX/MIN/Avg Function
- Auto Shut Off for Battery Saving
- 16,000 Records Datalogger Each Channel



SPECIFICATIONS

Range	-200 ~ 1370°C, -328 ~ 2498°F
Accuracy	±0.3%+1°C, ±0.3%+2°F
Resolution	0.1°C, 0.1°F
Input Protection	60V DC or 24 Vrms AC Maximum
Operation Temp.	0°C ~ 50°C (<80%RH)
Storage temp.	-20°C ~ 60°C (<70%RH)
Battery	9V Battery
Dimensions	196 x 65 x 36 mm
Weight	Approx. 285g.

STANDARD ACCESSORIES

9V Battery, Operation Manual, Carrying case, Temperature probe TP-K01 x 2 pcs, Software 374, USB Cable